

# 和歌山社会福祉専門学校

WAKAYAMA SOCIAL WELFARE SPECIAL SCHOOL

## ■ Hirogawa Campus (Main school) ■

1105, Shimotsugi, Hirogawa-cho, Arida-gun, Wakayama 643-0051  
Phone : 0737-67-2270

## ■ Hashimoto Campus ■

192-2, Kegano, Hashimoto-city, Wakayama 648-0093  
Phone : 0736-38-3601

Home Page



LINE



Instagram



Twitter



Facebook



## Nursing Care Course

(April intake, 2 years)



Wakayama Social Welfare  
Special School accepts a lot of  
international students who  
want to study nursing care!!

Kitaba Gakuen / Certified nursing care worker training facility designated by the Minister of Health, Labour and Welfare

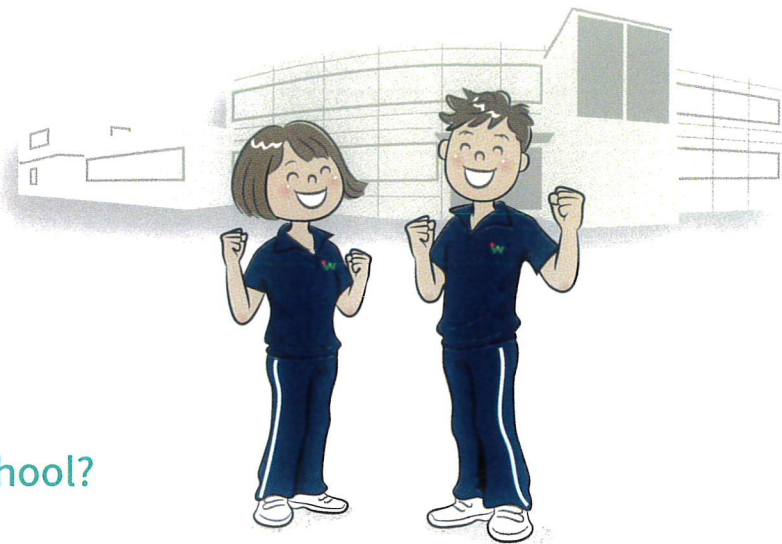


# 和歌山社会福祉専門学校

WAKAYAMA SOCIAL WELFARE SPECIAL SCHOOL



# Q&A about Wakayama Social Welfare Special School



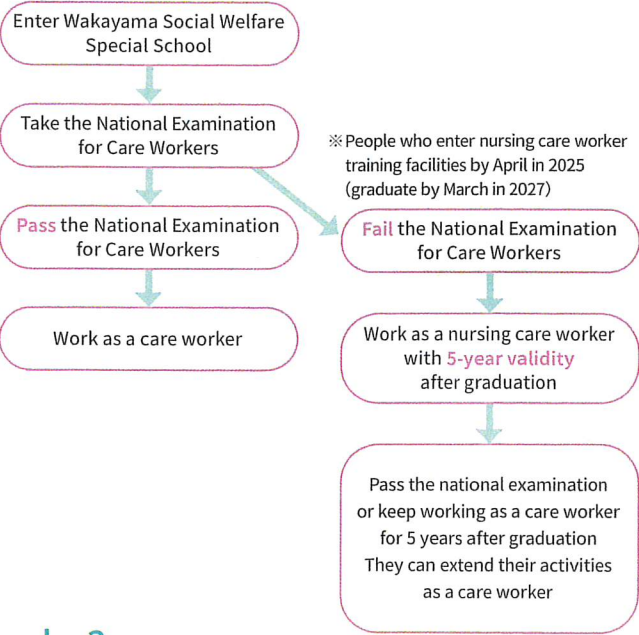
## Q What can I study in this school?

A You study **nursing care**.  
Nursing care is **to support people who have difficulties to spend lives by themselves because of advanced ages and disabilities by using technical knowledge and skills.**

## Q What qualifications can I get?

A You can get **Certified Care Worker** , a **national qualification** to give nursing care.

※ After your study for 2 years, you need to take the National Examination for Care Workers and pass it. However, people who enter nursing care worker training facilities by April in 2025 and take the national examination by January in 2027 will be entitled to a qualification of Certified Care Worker for 5 years even if they fail the national examination. When you pass the national examination or keep working as a care worker for 5 years after graduation, you can extend your work as a care worker in Japan.



## Q What will my status of residence be?

A **"Student"** while studying at vocational school, and **"Nursing care"** after graduation.

※ Foreign nationals who hold "Nursing care" visa can work in Japan, as long as they work as a care worker. (Application for extension is necessary.)

While you study at Wakayama Social Welfare Special School

Status of Residence **"Student"**

※ While you hold "Student" visa, you can do a part-time job for 28 hours per week at most. (8 hours a day at most on a long stay holiday)

After graduation

Status of Residence **"Nursing Care"**

※ You can live with your family together in Japan because Dependent visa can be approved.



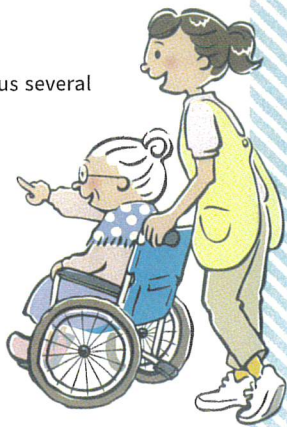
## Q Where is the school located in?

A **Wakayama Social Welfare Special School has 2 campuses.** Each campus **accepts 30 students at maximum.** You can choose the one that suits your preferences: Hirogawa campus with beautiful nature or Hashimoto Campus, where you can freely go shopping as it is close to Osaka.

※ When maximum capacity is reached, it might not be as you requested.  
※ Students studying in Hashimoto campus go to Hirogawa campus by bus and take classes in Hirogawa campus several times a month. (Bus fare is not required.)

## Q What does it cost for tuition fee?

A It costs JPY 20,000 for Entrance examination fee, JPY 300,000 for entrance fee, and JPY 1,680,000 for tuition fee for 2 years.  
In addition, textbooks, training wears and shoes, accident (liability) insurance, national examination fee and national qualification registration fee are not included.  
(※1st year, 2nd year: about JPY 80,000 )



## Q Are there a tuition loan system and a life support system?

A Yes. There is a tuition loan system and a living expenses support system with the cooperation of nursing care facilities. For the details, please see the attachment.  
If you work as a care worker 5 years after graduation, you don't need to repay the loan system and the living expenses support system. You need to repay in case you drop out of school or quit a job in less than 5 years after employment.

## Q What should I do to use a tuition loan system and a life support system?

A At first, it is necessary to pass an entrance examination for our school. After that, you attend an interview session, participated by nursing care companies that cost tuition fee and living expense for international students, held in December or January on the year before enrollment, and decide on a company you hope to work for.

※ It might not be as you requested.

## Q Please let me know 1 week schedule in case of doing a part-time job.

A (Ex) In case of doing a part-time job for 28 hours per week

	Monday	Tuesday	Wednesday	Thursday	Friday	Saturday	Sunday
9:00-16:00	School	School	School	School	School		
17:00-21:00	Part-time job (4 hours)	Part-time job (4 hours)	Part-time job (4 hours)	Part-time job (4 hours)	Part-time job (4 hours)	Off	Part-time job (8 hours)
21:00-	Coming home	Coming home	Coming home	Coming home	Coming home		Coming home

※ You can schedule your work shift within 28 hours per week after consulting with a nursing care company that supports you.  
※ It might not be as you requested.

